

TM

# sonatex

## ACOUSTIC LAMINATES



## TECHNICAL DATA SHEET



# sonatex™

Acoustic Laminates - up to NRC 1.00

## Technical Data Sheet

Sonatex™ is a proprietary composite glass mat acoustic laminate designed as a decorative finish to sound absorbing ceiling tiles and panels. Sonatex™ provides a flat durable finish and is available in 3 whites, RAL colours, and prints. Sonatex™ is manufactured in NZ, light weight, noncombustible, low in embodied energy, low VOC, easily customised and economical.

### Application

Sonatex™ is ideal as a decorative finish to acoustic ceiling panels in corporate office areas, lobbies, retail, halls, education facilities, entertainment and institutional buildings.

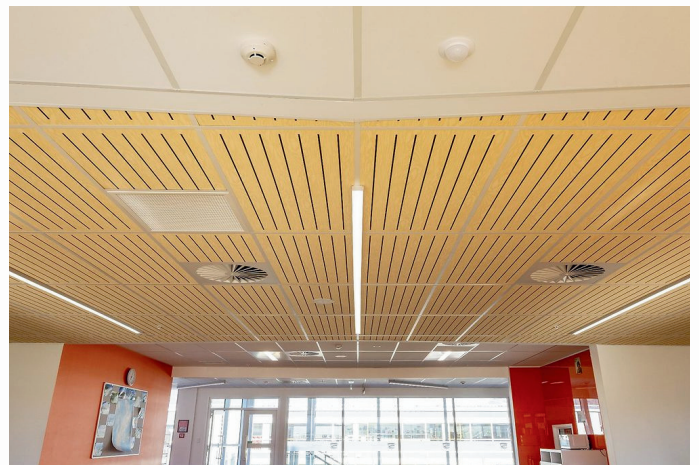
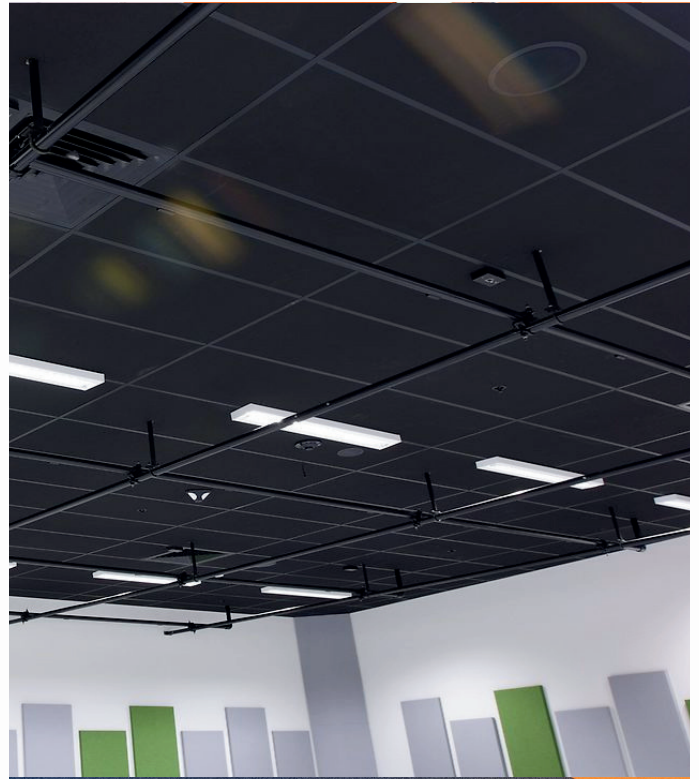
These finishes are designed for Asona's Triton and Polyfon high sound absorbing ceiling panels.

### Composition

Sonatex™ is made in New Zealand from glass mat composite sheets bonded together then laminated onto a variety of acoustic facing materials.

### Features & Benefits

- Noncombustible glass fibre composition, Fire Rating Group 1S
- Global GreenTag Certified when used with the Triton Range.
- Patent No.NZ2009208100 Patent No. AU570507
- Standard range of colours, custom RAL colours available to order.
- Acoustically transparent, can be tuned to provide high sound absorption up to NRC 1.00 and STC to 29dB.
- Prefinished, lightweight & dimensionally stable.
- Semi-translucent, diffuses light when used in an AO-Gami feature.
- Made in New Zealand



ISO 9001:2015 Registered Firm No. NZ1014

© 2024 Copyright ASONA Ltd Asona, Sonatex and Sonaris are trade marks of Asona Ltd. All dimensions are nominal. We reserve the right to change specifications. Ref. Sonatex-24.10

Asona Ltd. Office & Factory  
6 Mahunga Drive, Māngere  
Bridge, Auckland 2022  
New Zealand  
NZBN: 9429036035175

New Zealand  
T: +64(0)9 525 6575  
E: info@asona.co.nz  
W: www.asona.co.nz

Australia  
T: 1 800 240361  
E: info@asona.com.au  
W: www.asona.com.au

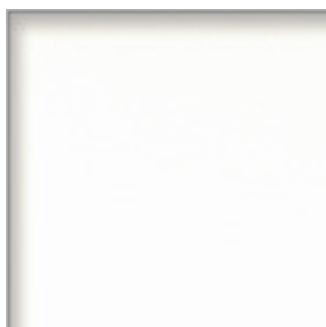
**asona**

## Sonatex™ - Acoustic Laminate Shades, Colours and Prints

### White to Black



A180 Standard White



Hygiene Facing (not for Sonaris)



RAL 9002 White Grey



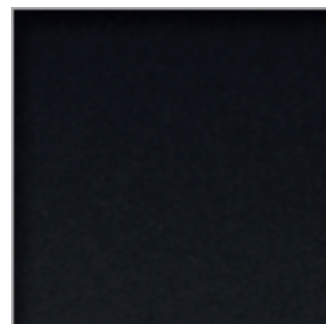
RAL 7040 Light Cool Grey



RAL 7030 Mid Warm Grey



RAL 7045 Mid Cool Grey



RAL 9011 Black

### Prints

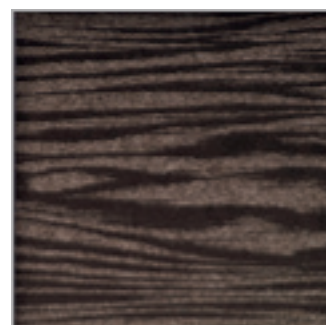
(not to scale)



Wood print RAL 1013



Wood print RAL 1001 (TON 1127)



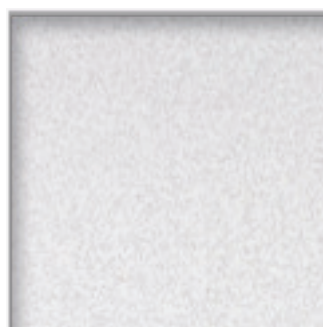
Wood print RAL 8019

Custom colours are available to order,  
minimum quantity do apply.

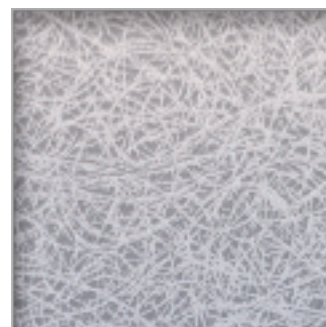
Contact Asona for Sonatex samples:

Email: [info@asona.co.nz](mailto:info@asona.co.nz)

Phone: +64 (0) 9 525 6575



600 Stipple Print



Woodwool print RAL 7040

Asona Sonatex is colour matched to the RAL Classic K7 range colours standard. The colour accuracy of this swatch card is dependent on your viewing screen and/or printer used.

ISO 9001:2015 Registered Firm No. NZ1014

© 2024 Copyright ASONA Ltd Asona, Sonatex and Sonaris are trade marks of Asona Ltd.  
All dimensions are nominal. We reserve the right to change specifications.  
Ref. Sonatex-24.10

Asona Ltd. Office & Factory  
6 Mahunga Drive, Māngere  
Bridge, Auckland 2022  
New Zealand  
NZBN: 9429036035175

New Zealand  
T: +64(0)9 525 6575  
E: [info@asona.co.nz](mailto:info@asona.co.nz)  
W: [www.asona.co.nz](http://www.asona.co.nz)

Australia  
T: 1 800 240361  
E: [info@asona.com.au](mailto:info@asona.com.au)  
W: [www.asona.com.au](http://www.asona.com.au)

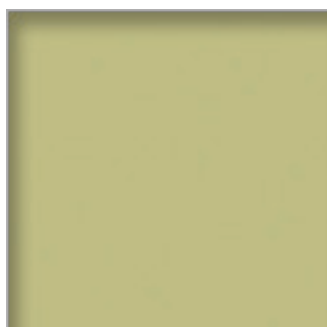
**asona**



## Sonatex™ - Acoustic Laminate Shades, Colours and Prints

### Soft Colours

Minimum order quantity may apply, speak to your Asona Consultant.



RAL 1000 Puka Green



RAL 4009 Egmont Grey



RAL 1001 Taupo Clay



RAL 1015 Oyster Bay



RAL 9018 Porirua Mist



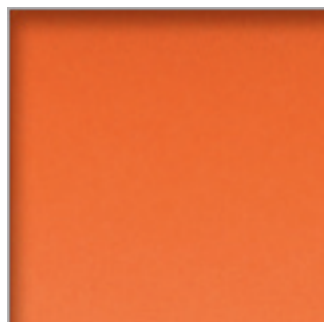
RAL 3012 Flax Seed

### Bright Colours

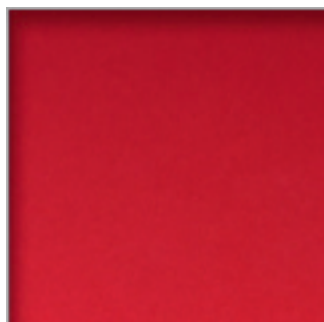
Minimum order quantity may apply, speak to your Asona Consultant.



RAL 1018 Zinc Yellow



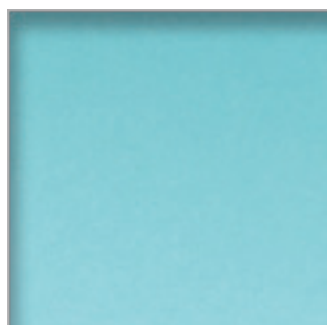
RAL 2009 Traffic Orange



RAL 3020 Traffic Red



RAL 6032 Traffic Green



RAL 6027 Aqua



Cobalt Blue



RAL 1004 Gold



RAL 1014 Ivory

