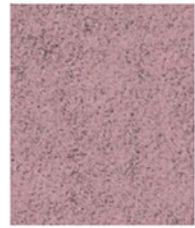


Blazer Lite



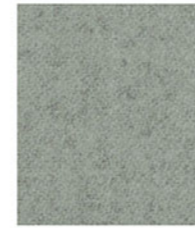
Daydream LTH46



Love LTH47



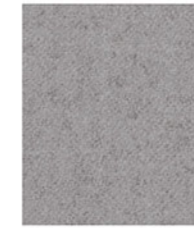
Bliss LTH48



Pillow LTH43



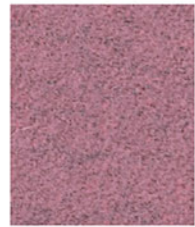
Harmony LTH63



True LTH61



Retreat LTH39



Angel LTH49



Hope LTH50



Graceful LTH51



Dainty LTH64



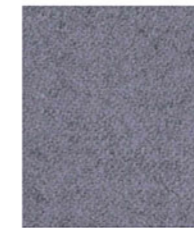
Tender LTH53



Aspire LTH52



Balance LTH41



Pastel LTH65



Faith LTH68



Cuddle LTH62



Praise LTH54



Buddah LTH56



Happy LTH55



Wish LTH67



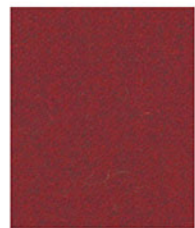
Pamper LTH66



Solace LTH70



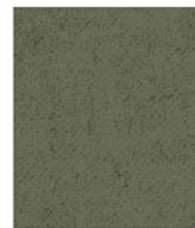
Verity LTH57



Devoted LTH58



Worship LTH59



Shelter LTH60



Hush LTH42



Mood LTH44



Haven LTH40



Freedom LTH69

Blazer Lite



Panels

E

Composition	100% Virgin Wool. Non metallic dyestuffs
Second Nature	Renewable & compostable
Width	170cm minimum
Weight	365g/m2 ±5% (620g/lin.m. ±5%)
Flammability	AS1530.3, ASNZS3837/ISO5660, BS 476 Part 7 Class 1, BS 476 Part 6 Class 0 <i>Note: Flammability performance is dependent on components used.</i>
Light Fastness	5 (ISO 105 - B02:2013)
Fastness to Rubbing	Wet: 4 Dry: 4 (ISO 105 - X12:2002)
Maintenance	Vacuum regularly. Professionally dry clean or wipe clean with a damp cloth.
Colour Matching	Batch to batch variations in shade may occur within commercial tolerances.

Please note that ultimate seam performance is dependent on seam construction, and needle and thread type. We recommend that appropriate sewing advice be taken.
Note: We reserve the right to alter technical specifications without notice.
The Unregistered Design Rights and the Copyright in all designs are the exclusive property of Camira Fabrics Limited.

F

Composition	100% Laine Vierge. Teintures non métalliques
Second Nature	Renouvelable & bio-dégradable
Largeur	170cm minimum
Poids	365g/m2 ±5% (620g/lin.m. ±5%)
Flammabilité	AS1530.3, ASNZS3837/ISO5660, BS 476 Part 7 Class 1, BS 476 Part 6 Class 0 <i>Note: Réaction au feu dépend du composite utilisé.</i>
Solidité à la lumière	5 (ISO 105 - B02:2013)
Solidité au Frottement	Mouillé: 4 Sec: 4 (ISO 105 - X12:2002)
Nettoyage	Aspirer régulièrement. Nettoyage à sec professionnel. Autrement, essuyer avec une étoffe humide.
Standardisation des coloris	Variations de coloris d'un bain à un autre peuvent se manifester.

Veillez noter que le glissement de la couture sous tension dépend de la structure de la couture, de l'aiguille et du fil. Nous recommandons de prendre conseil au près d'un professionnel.
Veillez noter que nous réservons le droit de modifier les spécifications techniques sans préavis.
Les droits non-déposés sur les designs ainsi que les droits de copie sont la propriété exclusive de Camira Fabrics Limited.

D

Zusammensetzung	100% Rohe Wolle. Nicht schwermetallhaltige Farbstoffe
Second Nature	Nachwachsend und kompostierbar
Breite	170cm nutzbare Breite
Gewicht	365g/m2 ±5% (620g/lin.m. ±5%)
Feuersicherung	AS1530.3, ASNZS3837/ISO5660, BS 476 Part 7 Class 1, BS 476 Part 6 Class 0 <i>Bemerkung: Schwerentflammbarkeit hängt von verwendeten Komponenten ab.</i>
Lichtechtheit	5 (ISO 105 - B02:2013)
Reibechtheit	Nass: 4 Trocken: 4 (ISO 105 - X12:2002)
Reinigung	Regelmässig absaugen. Professionelle Trockenreinigung. Alternativ dazu mit einem feuchten Tuch abwischen.
Farbabweichungen	Handelsübliche Farbabweichungen vorbehalten

Eine optimale Nahtausreißfestigkeit hängt von der Nahtführung, der verwendeten Nadel und des Fadens ab. Wir empfehlen daher Nähveruche durchzuführen.
Anmerkung: Wir behalten uns die Änderungen technischer Spezifikationen vor.
Die registrierten und nicht registrierten Urheberrechte an den Dessinierungen sind ausschließliches Eigentum der Camira Fabrics Limited.

ES

Composición	100% Lana Virgen. Tintes no metálicos
Second Nature	Renovable & Biodegradabilidad
Ancho	170cm mínimo
Peso	365g/m2 ±5% (620g/lin.m. ±5%)
Inflamabilidad	AS 1530.3, ASNZS3837/ISO5660 BS 476 Part 7 Class 1, BS 476 Part 6 Class 0 <i>Condiciones ignífugas dependientes del tipo de foam utilizado</i>
Solidez a la luz	5 (ISO 105 - B02:2013)
Solidez al rozamiento	Húmedo: 4 Seco: 4 (ISO 105 - X12:2002)
Limpieza	Limpiar con aspiradora con regularidad. Limpiar en seco, o bien lavar con un paño húmedo.
Continuidad de colores	Cada tintada puede tener pequeñas variaciones en el tono dentro de las tolerancias comerciales aceptadas.

El desfilamiento de costura depende de su construcción así como el tipo de aguja e hilo empleados. Se recomienda que pida consejos apropiados para la costura.
Se reserva el derecho de modificar las especificaciones técnicas sin previo aviso.
Los derechos sobre dibujos no registrados y los derechos de autor sobre todos los dibujos son propiedad exclusiva de Camira Fabrics Limited.

at work*
with
Camira

Blazer Lite

“Blazer Lite is a finer version of our Blazer upholstery fabric making it lighter in weight for use on desk screens, panels and other vertical surfaces. The felted, milled finish sports a colour palette consisting of melange mixes and plain shades, as well as subtle pastels and iridescent brights.”

Ruth Greenup, Designer



Camira fabrics are brought to Australasia by Textilia

camira

at work*
with
Camira

AUSTRALIA
telephone: 1800 173209
facsimile: 1800 723264
web: atworkwithcamira.com
email: sales@atworkwithcamira.com
*at work is a brand of Textilia

at work*
with
Camira

NEW ZEALAND
telephone: +64 9 3685768
facsimile: +64 9 3685769
web: textilia.co.nz
email: info@textilia.co.nz
*at work is a brand of Textilia