

Premier Pinboard

Fabric wrapped mineral fibre wall panel

Technical Data sheet



asona

Description.

Premier Pinboard is a superior mineral fibre fabric wrapped wall panel available in a wide range of decorative fabric finishes.

Application.

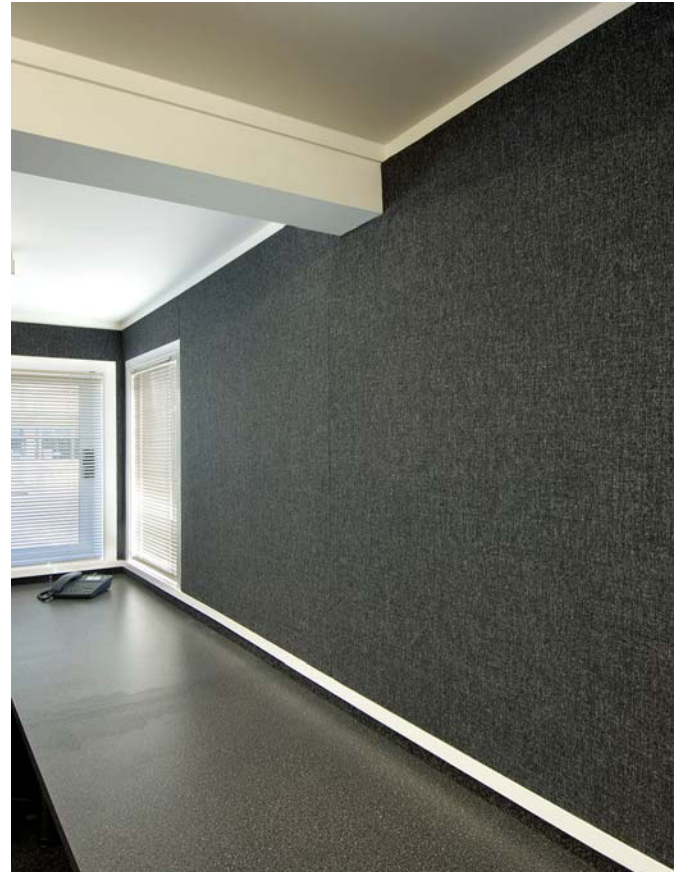
Premier Pinboard is designed for use in general office and the education environment where a tackable wall surface is required. Suitable for notice boards, meeting rooms, training rooms, classrooms and corridors etc.

Composition.

Manufactured from fire resistant wet felt mineral fibre core, laminated and edge wrapped in fabric.

Benefits.

- Tackable wall finish
- Standard sheet sizes and custom sizes to order.
- Available in a wide range of coloured fabric finishes.
- Base board is sanded to provide a superior flat finish.
- Light weight at 4.5 kg/m²
- Rigid panel can be fixed to studs or battens at 300mm centres or glue fixed over plasterboard lining.
- Easy to trim and install.
- Available to order, lead times 2-3 weeks



Technical Specifications

Item #	Size (nominal) *	Edge
PR13.1212	13 x 1200 x 1200 mm	SQ
PR13.1215	13 x 1200 x 1500 mm	SQ
PR13.1224	13 x 1200 x 2400 mm	SQ

Fabric Finishes:

A variety of woven and non woven fabric finishes are available. Quantum, Fame, Cloth, etc. Please contact Asona for full range.

Fire Reaction:

Base Board Group 1S with fabric minimum Group 3, C/VM2 / ISO 5660.1

Humidity:

Dimensionally stable, Max 95% R/H at 30°C.

Maintenance:

Clean with vacuum, soft brush.

NZ Building Code:

Clause B2—durability, 5 years

Thermal Resistance:

R 0.3 m²°C/W

Tolerance:

Less than -3 mm

Weight:

4.5 kg/m²

Specification:

Pinboard panels shall be Premier Pinboard with fire resistant mineral fibre board core, as manufactured and supplied by Asona Ltd. Tel: 09 525 6575, item # (), fabric facing shall be (Quantum)(Fame)(Cloth)(other), size () x ()mm, (13) mm thick, sound absorption NRC 0.25, thermal insulation R0.3.

Installation shall not commence until the building is water tight and dry. Panels shall be glue fixed to wall lining or glued and pinned to timber framing at 300 mm centres.

Asona Ltd

P.O Box 96-241 Balmoral,
Auckland, 1342, New Zealand
Sales Tel: 09 5256575
Email: info@asona.co.nz
Web: www.asona.co.nz

Factory:
Building 14, 7 Cain Road
Penrose, 1061
Auckland, New Zealand
Tel: 09 525 6575
Fax: 09 525 6579

ISO 9001:2008 Certified Firm. No.NZ1014

© Copyright ASONA Ltd 2017
Asona, Premier Pinboard are trade marks of Asona Ltd
All dimensions are nominal. We reserve the right to change specifications .
Ref. Premier Pinboard 1704