

# Snaptex™

## Stretched Fabric Wall and Ceiling System

### Technical Data sheet



asono

#### Description.

Snaptex™ is a site built stretched fabric wall and ceiling system available in a wide range of decorative finishes. Panels can be large with sewn seams or panelized with expressed negative detail in square, round or bevel edges. For acoustic control a 15,25,40,50,75, 100 mm high density glass fibre absorber panel is fitted under the fabric.

#### Application.

Snaptex™ helps create unique upscale interiors, ideal for noise control in meeting rooms, cinema, theatre, music rooms, restaurants, hotels, healthcare facilities etc.

#### Composition.

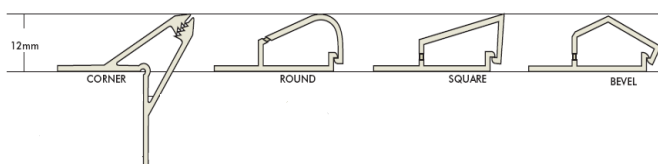
Snaptex™ system comprises Snaptex fabric tensioning track fixed to wall, fire resistant glass fibre board with impact resistant Sonatex 250 acoustic facer for a firm feel under fabric. Finished with a decorative fabric stretched taut with Snaptex track. Low density polyester wadding can be added where a soft padded look is desired.

#### Benefits.

- Wide range of fabric finishes available
- Unique hinged interlocking jaws for perfect fabric tension and grip, snaptex is easily re-opened for fabric maintenance
- High sound absorption, NRC 0.75—1.00, quiet comfort.
- Square, bevel or reveal edge details, Sonatex 250 impact or padded interlayer options.
- Site built for a perfect fit around architectural detail
- Installed by our trained professional fixers.

#### Technical Specifications

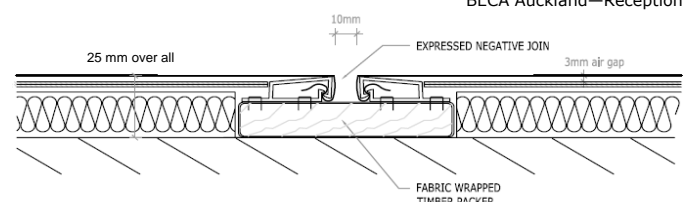
Sound Absorption Rating: Per ASTM C423							
Type A, direct fix to plasterboard lining, 25mm system							
NRC 0.85, 50 mm system NRC 1.00.							
Panel	Hz	125	250	500	1000	2000	4000
System 25	∂p	0.15	0.35	0.85	1.00	1.00	1.00
System 50	∂p	0.35	0.85	1.00	1.00	1.00	0.95
System 75	∂p	0.60	1.00	1.00	1.00	1.00	1.00
System 100	∂p	0.90	1.00	1.00	1.00	1.00	0.90



ASB North Wharf—Media Silo



BECA Auckland—Reception



## Technical Specifications

### Fabric finishes:

A wide range of screen fabrics are available, contact Asona. Client supplied fabric subject to prior approval. Thin fabrics may require backing to reduce show through of edge track.

### Dimensions:

Panels width and length determined by fabric selection and join detail. Thickness to suit acoustic absorption requirements. 15, 25, 40, 50, 75, 100mm thick systems. Refer Asona

### Environmental impact:

From new and recycled content. Core from 80% recycled glass fibre, low VOC. Easy to deconstruct or renew.

### Fire Reaction:

Material group number: 2,2S, C/VM2 / ISO 5660.1. Dependant on fabric selection, consult Asona.

### Maintenance:

Fabric can be vacuumed to remove dust and regular cleaning agents used for spot removal. If required the fabric may be removed for cleaning or refurbishment

### Limitations:

Do not install in wet areas, for high impact zones consult Asona. Direct exposure to sun light may result in fabric fade. Fabric colour may vary batch to batch.

### NZ Building Code:

Clause B2—durability, 5 years

### Installation:

Snaptex is a decorative finish and shall be installed late in the build program once the building is water tight and free of dust and debris from other trades. Utility outlets shall be mounted flush with fabric face.

### Snaptex Profiles:

Standard 14mm profiles, fix to timber packer for use with 25, 50, 75, 100 mm core board. Other profiles available.

### Specification:

Fabric panels shall be Snaptex™ stretched fabric acoustical panels, system, site built, as supplied and installed by Asona Ltd. Tel: 09 525 6575 Fax: 09 525 6579. Fabric finish shall be (specify type), fabric width, panel join type (10mm negative) (3 mm pencil line) (sewn seam) Panel size shall be (length) x (width), panel thickness shall be (15)(25)(40)(50)(75)(100) mm. Fire group (2)(2S)



Beaumont Centre—Auditorium



BECA Auckland—Boardroom



MIT Manukau—Landings

### Asona Ltd

P.O Box 96-241 Balmoral,  
Auckland, New Zealand

Sales:

Tel: 09 525 6575

Email: [info@asona.co.nz](mailto:info@asona.co.nz)

Web: [www.asona.co.nz](http://www.asona.co.nz)

Factory:

Building 14, 7 Cain Road  
Penrose

Auckland, New Zealand

Tel: (09) 525 6575

Fax: (09) 525 6579

ISO 9001:2008 Registered Firm No. NZ1014

© Copyright ASONA Ltd 2017

Asona, Snaptex are trade marks of Asona Ltd

All dimensions are nominal. We reserve the right to change specifications .

Ref. Snaptex -1705



# QuickLock™

## Stretched fabric acoustic wall system

### Technical Data sheet



asona

#### Description.

QuickLock™ is an economical stretched fabric wall system designed for classrooms and other learning environments where a tack and staple receptive wall lining is desired.

#### Application.

QuickLock™ is ideal for classrooms, corridors, meeting rooms, corporate offices or anywhere that requires a pin & tack surface.

#### Composition.

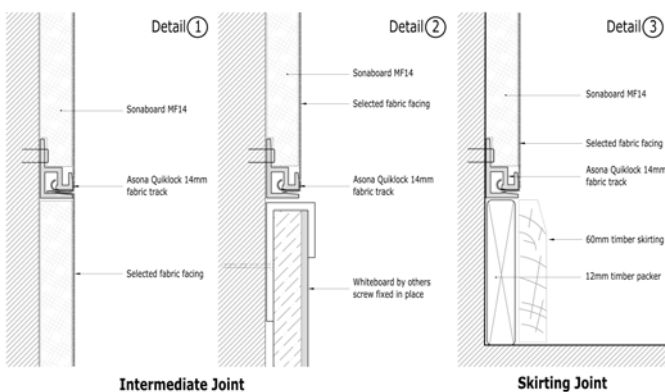
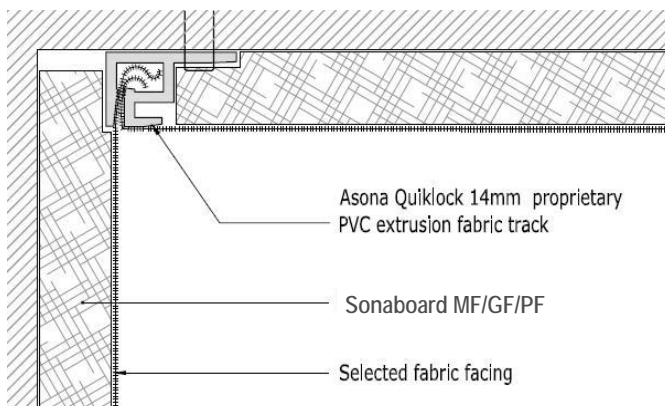
Fabric finish, Sonaboard MF™ (Mineral Fibre), Sonaboard GF™ (Glass Fibre), Sonaboard PF™ (Polyester Fibre) core, QuickLock QL14™ fabric tensioning track.

#### Benefits.

- Attractive range of fabric finishes in 160, 170 or 188 cm widths which allows for large panel layouts.
- Green Credits with Sonaboard MK & GF due to 80% recycled content and low VOC.
- Installs fast to save construction time and labour costs.
- Sonaboard MF/GF/PF core will span over wall board joins so no need to plaster to level 3.
- Mechanical fixed to the wall so no need to use contact adhesives with their resulting high VOC off-gassing.
- Built on site by our registered installers.



#### Technical Specifications



## Technical Specifications

### Fabric finishes:

Standard fabric finishes, other screen fabrics are available, contact Asona. Client supplied fabric subject to prior approval.

### Dimensions:

Panels width and length determined by fabric selection and join detail. Refer Asona

### Fire Reaction:

Material group number: 2S, C/VM2 / ISO 5660.1, Branz tested. Suitable for sleeping spaces and all other occupied spaces.

### Maintenance:

Fabric can be vacuumed to remove dust and regular cleaning agents used for spot removal. If required the fabric may be removed for cleaning or refurbishment

### Limitations:

Do not install in wet areas, for high impact zones consult Asona. Direct exposure to sun light may result in fabric fade. Fabric colour may vary batch to batch.

### NZ Building Code:

Clause B2—durability, 5 years

### Installation:

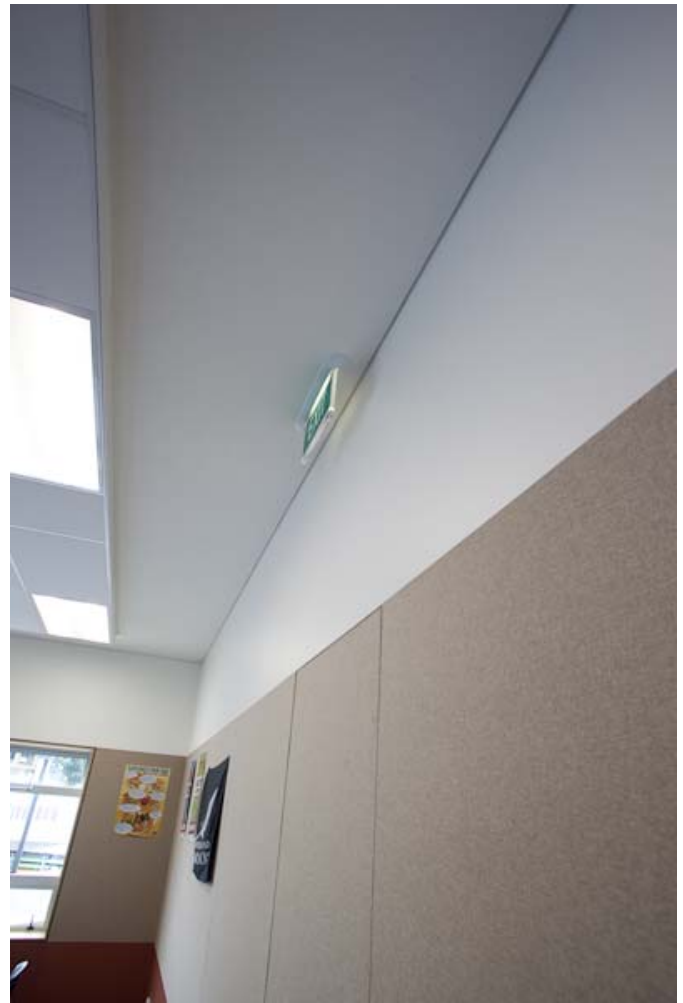
Asona QuickLock™ is a decorative finish and shall be installed late in the build program once the building is water tight and free of dust and debris from other trades. Utility outlets shall be mounted flush with fabric face.

### QuickLock Fabric Track:

Secures fabric in place, standard 14mm deep profile with friction fit design. Other profiles available to order

### Specification:

Wall lining shall be QuickLock™ stretched fabric panels, comprising (Sonaboard MF™)(Sonaboard GF™)( Sonaboard PF™) core, Quicklock QL14 fabric track, selected fabric finish, as supplied and installed by Asona Ltd. Tel: 09 525 6575 Fax: 09 525 6579. Fabric finish shall be (specify type), fabric width, panel join type (seamless) (butt join(10mm negative) Install panels in (railroad) (vertical) panels, size shall be (length) x (width), panel thickness shall be (14mm) (other). Fire group 2S.



St Peters College—Classroom



Salvation Army HQ

### Asona Ltd

P.O Box 96-241 Balmoral,  
Auckland, New Zealand  
Sales: 09 525 6575  
Email: [info@asona.co.nz](mailto:info@asona.co.nz)  
Web: [www.asona.co.nz](http://www.asona.co.nz)

Factory:  
Building 14, 7 Cain Road  
Penrose  
Auckland, New Zealand  
Tel: (09) 525 6575  
Fax: (09) 525 6579

ISO 9001:2008 Registered Firm No. NZ1014

© Copyright ASONA Ltd 2015  
Asona, QuickLock are trade marks of Asona Ltd  
All dimensions are nominal. We reserve the right to change specifications .  
Ref. QuickLock-1504